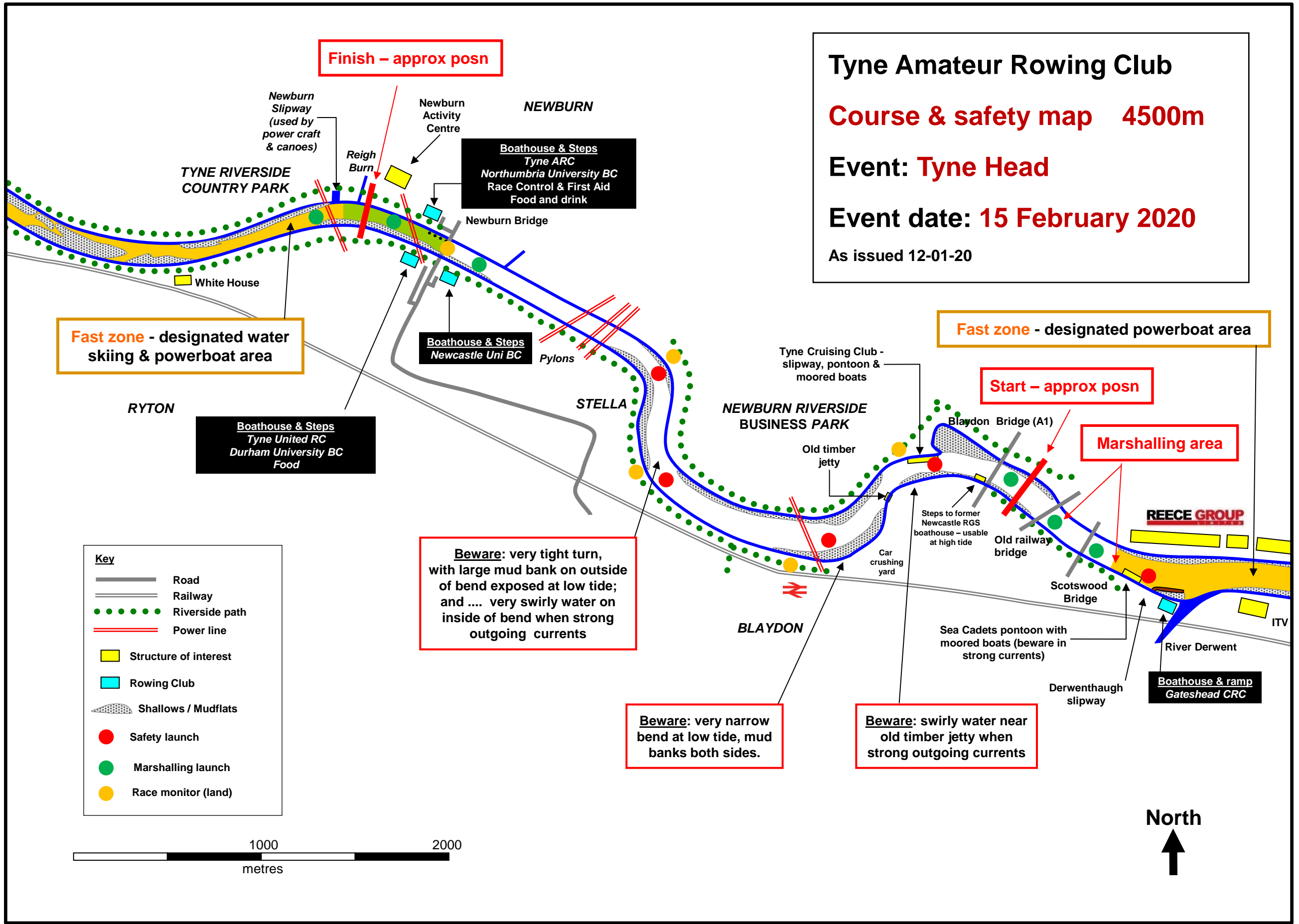


Tyne Amateur Rowing Club
Course & safety map 4500m
Event: Tyne Head
Event date: 15 February 2020
 As issued 12-01-20



Finish – approx posn

Start – approx posn

Fast zone - designated water skiing & powerboat area

Fast zone - designated powerboat area

Marshalling area

Beware: very tight turn, with large mud bank on outside of bend exposed at low tide; and ... very swirly water on inside of bend when strong outgoing currents

Beware: very narrow bend at low tide, mud banks both sides.

Beware: swirly water near old timber jetty when strong outgoing currents

Key

- Road
- Railway
- Riverside path
- Power line
- Structure of interest
- Rowing Club
- Shallows / Mudflats
- Safety launch
- Marshalling launch
- Race monitor (land)

